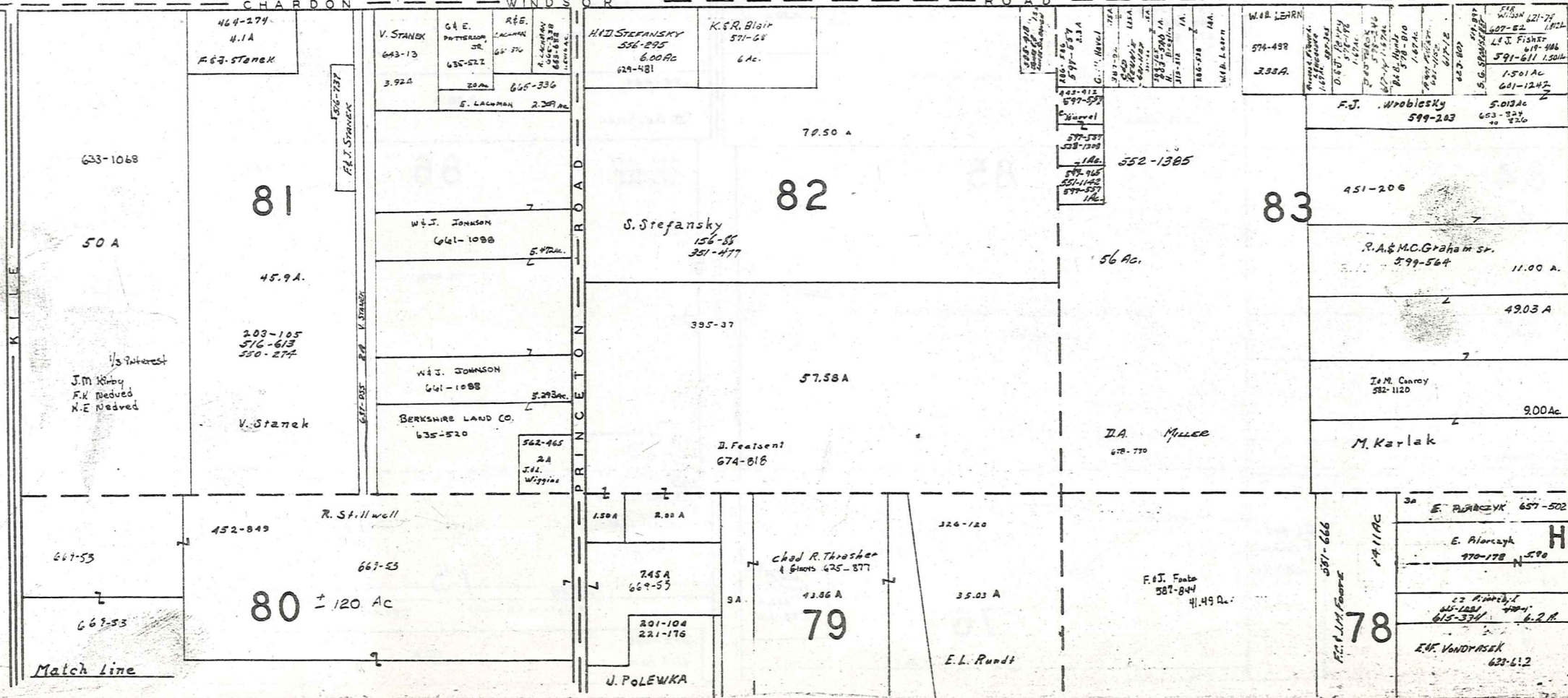
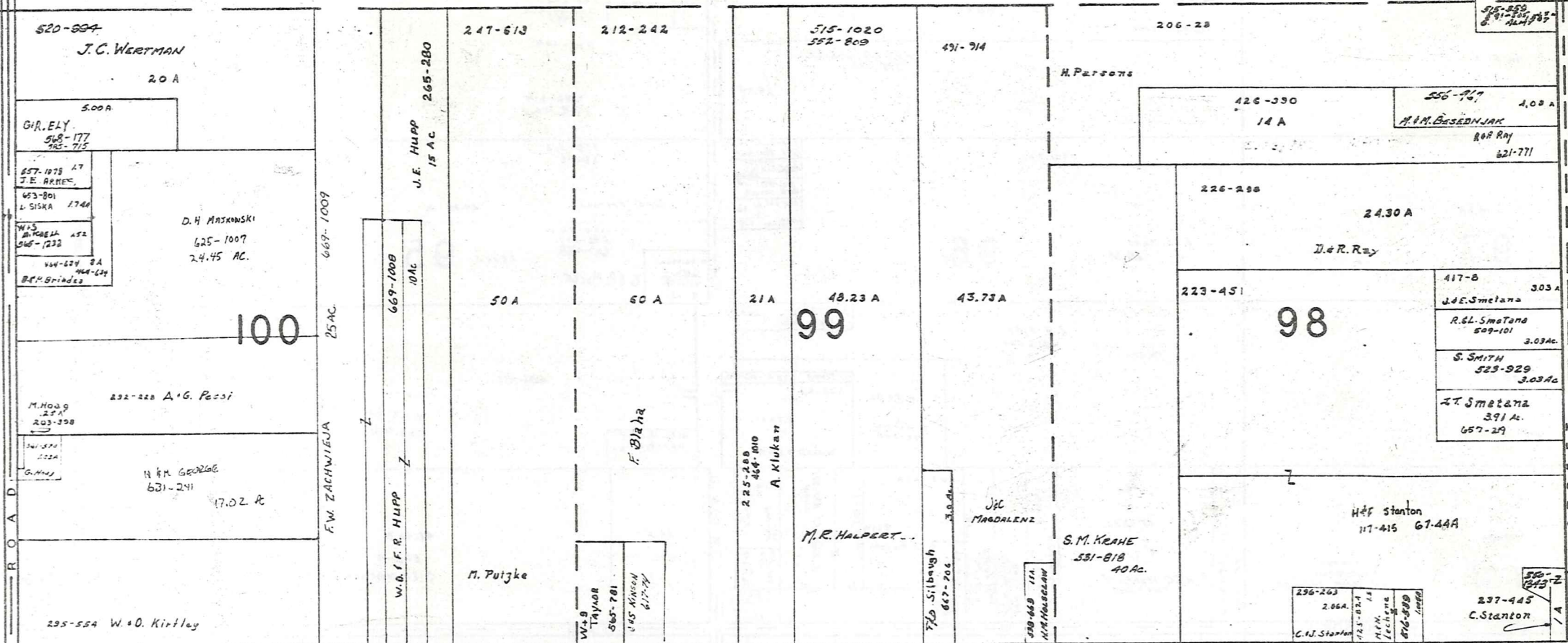


MONTVILLE TOWNSHIP

TOWNSHIP

CLARIDON



SCALE 1" = 300
 JAN. 1982

A	B	C	D
E	F	G	H
I	J	K	L
M	N	O	P

HUNTSBURG TWP.

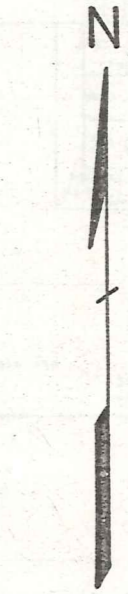
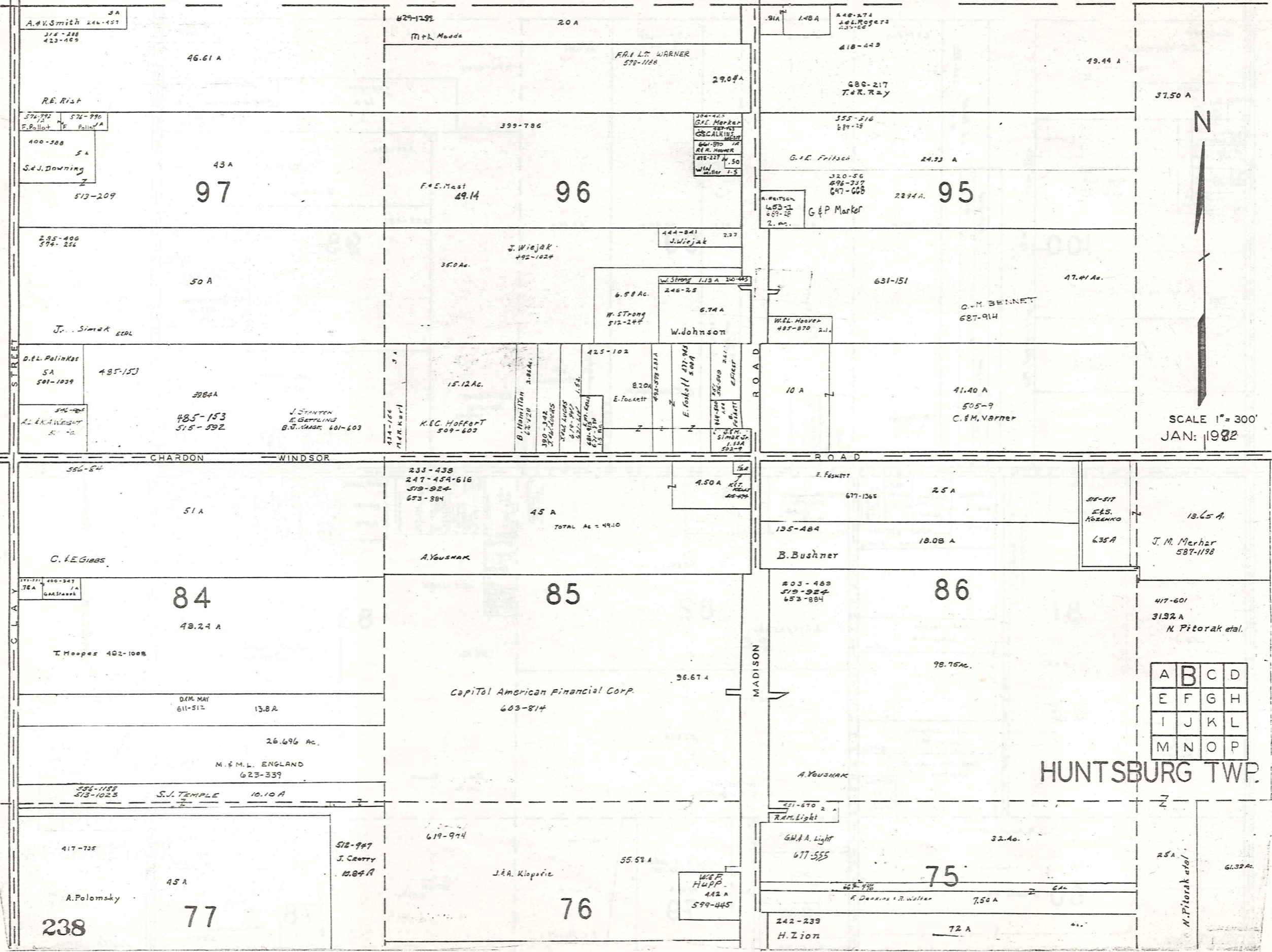
237

Match Line

Match Line

MONTVILLE

TOWNSHIP

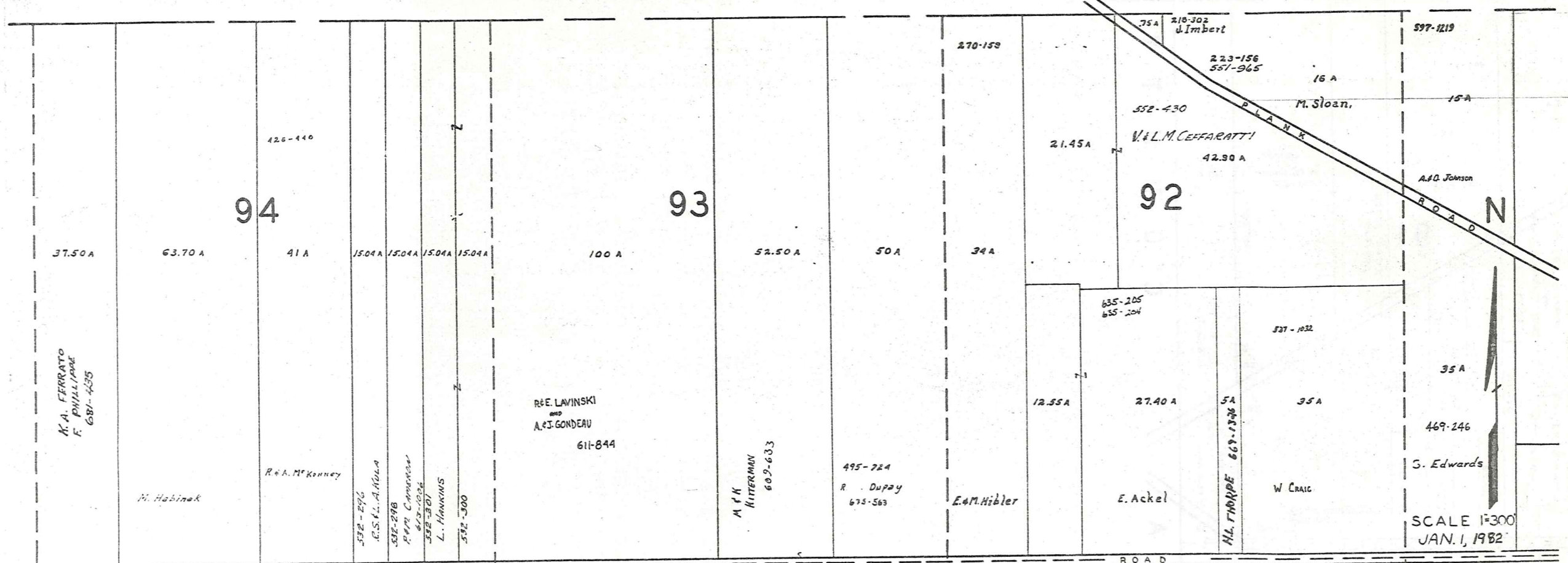


SCALE 1" = 300'
JAN: 1982

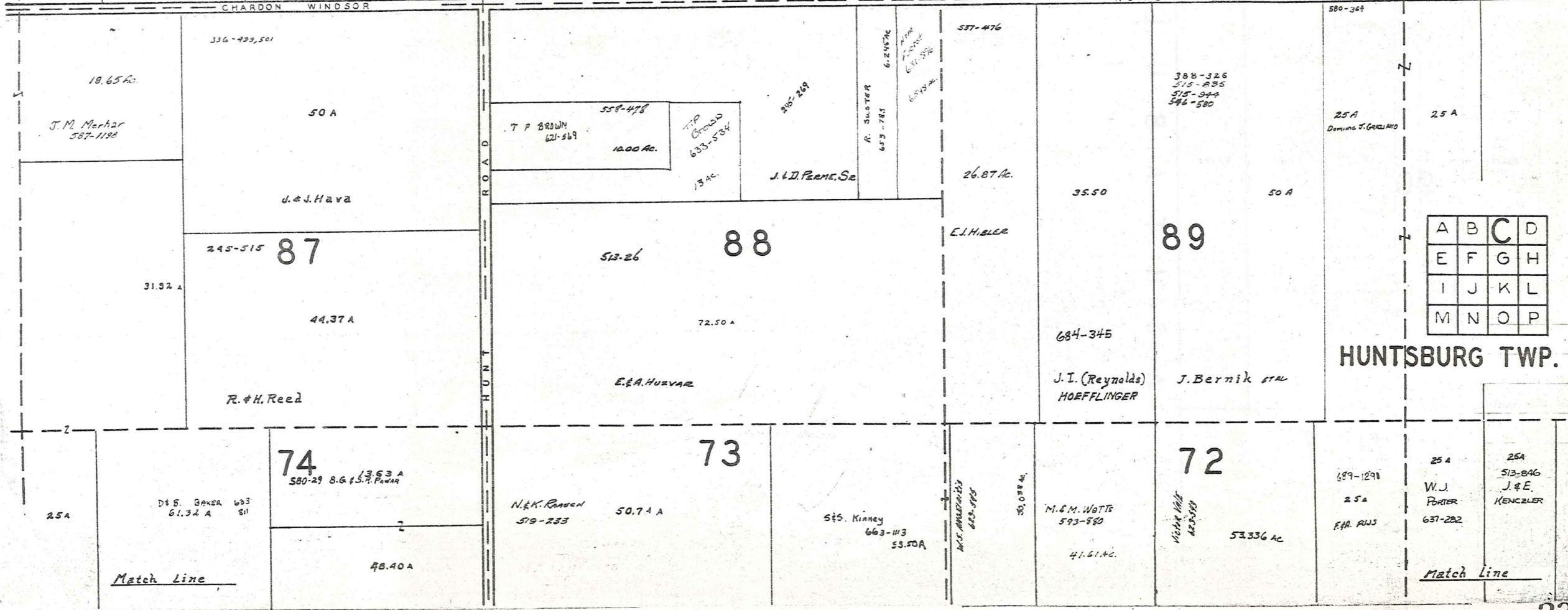
A	B	C	D
E	F	G	H
I	J	K	L
M	N	O	P

HUNTSBURG TWP.

MONTVILLE TOWNSHIP



SCALE 1"=300'
JAN. 1, 1982



HUNTSBURG TWP.

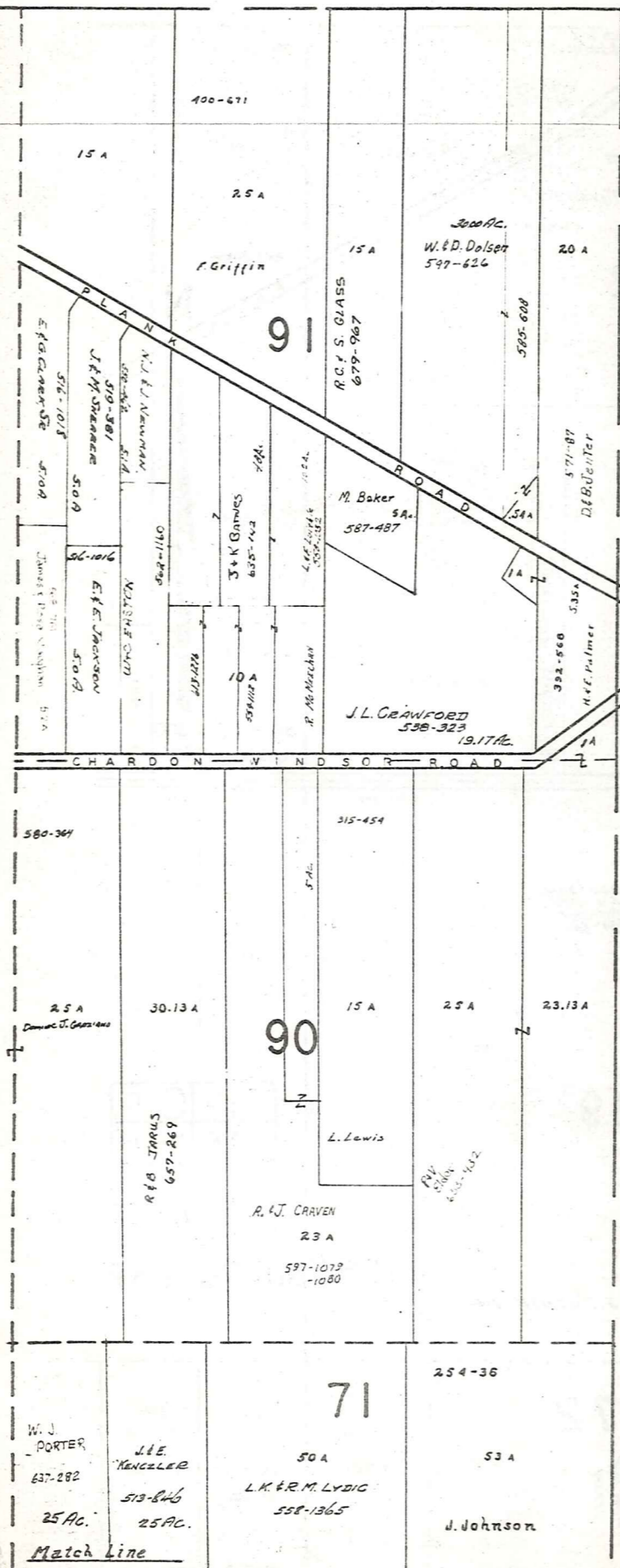
A	B	C	D
E	F	G	H
I	J	K	L
M	N	O	P

Match Line

Match Line

MONTVILLE TWP.

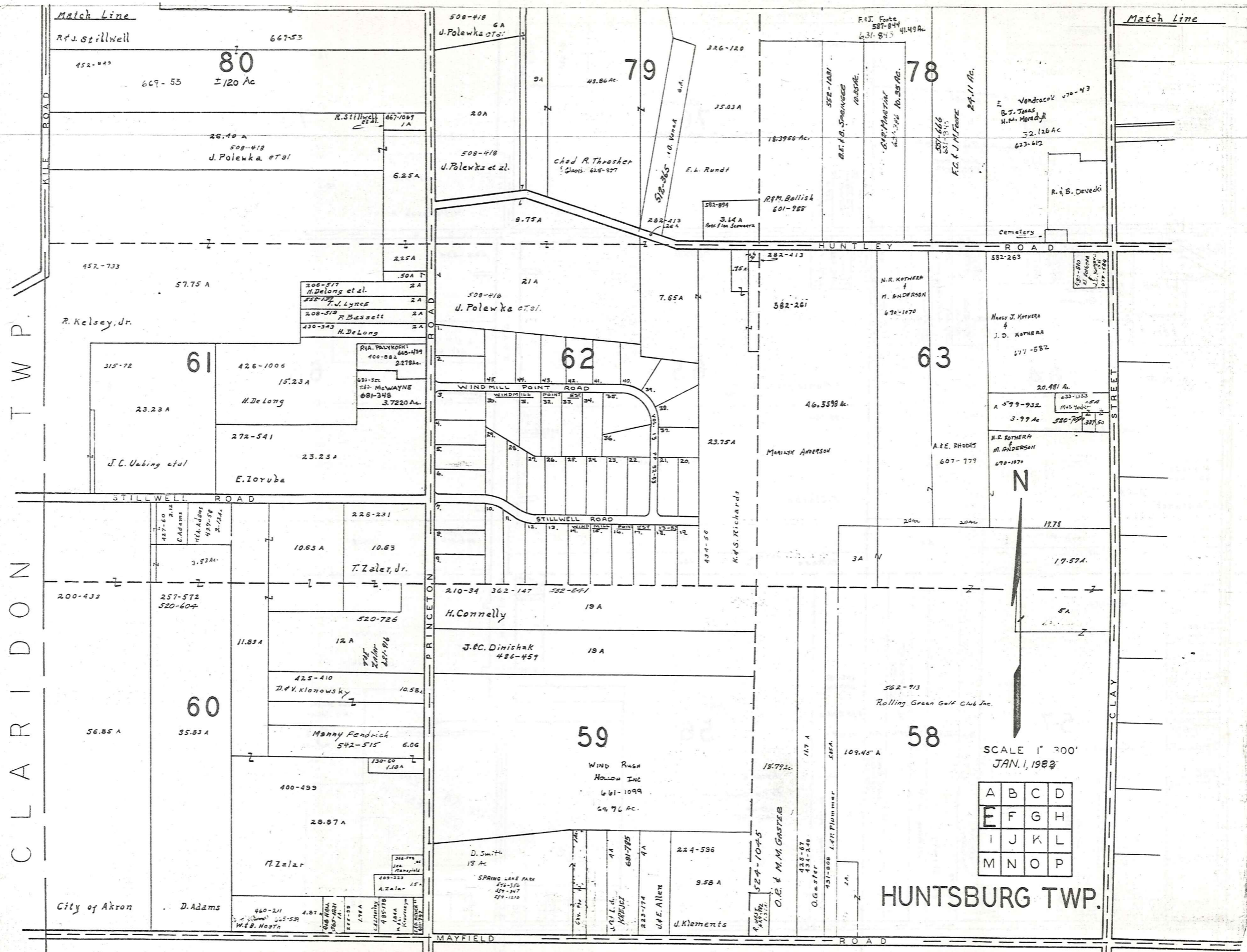
C O U N T Y
A S H T A B U L A



SCALE 1"=300'
JAN. 1, 1982

A	B	C	D
E	F	G	H
I	J	K	L
M	N	O	P

HUNTSBURG TWP.



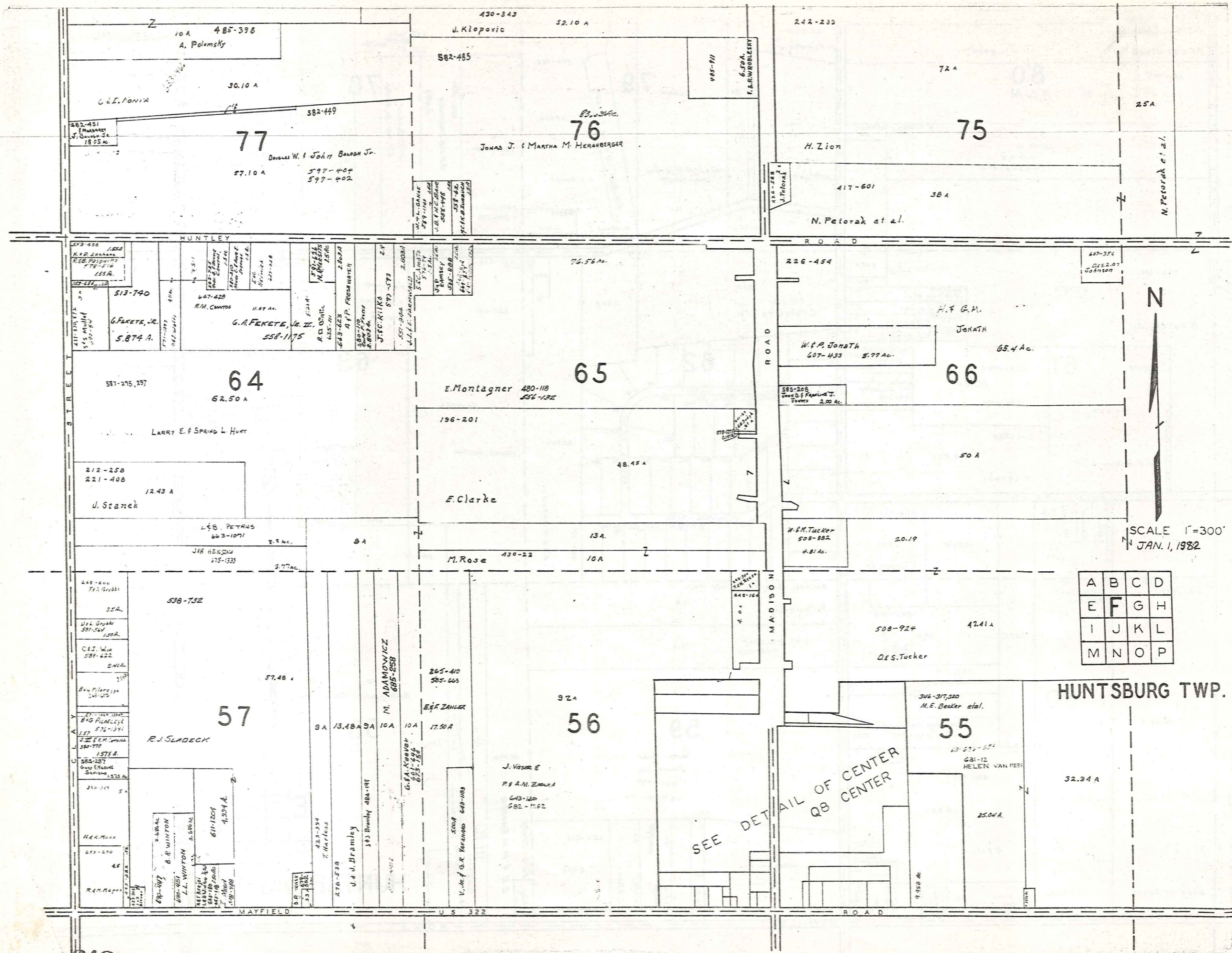
CLARIDON TWP.

CLAY STREET

SCALE 1" = 300'
JAN. 1, 1922

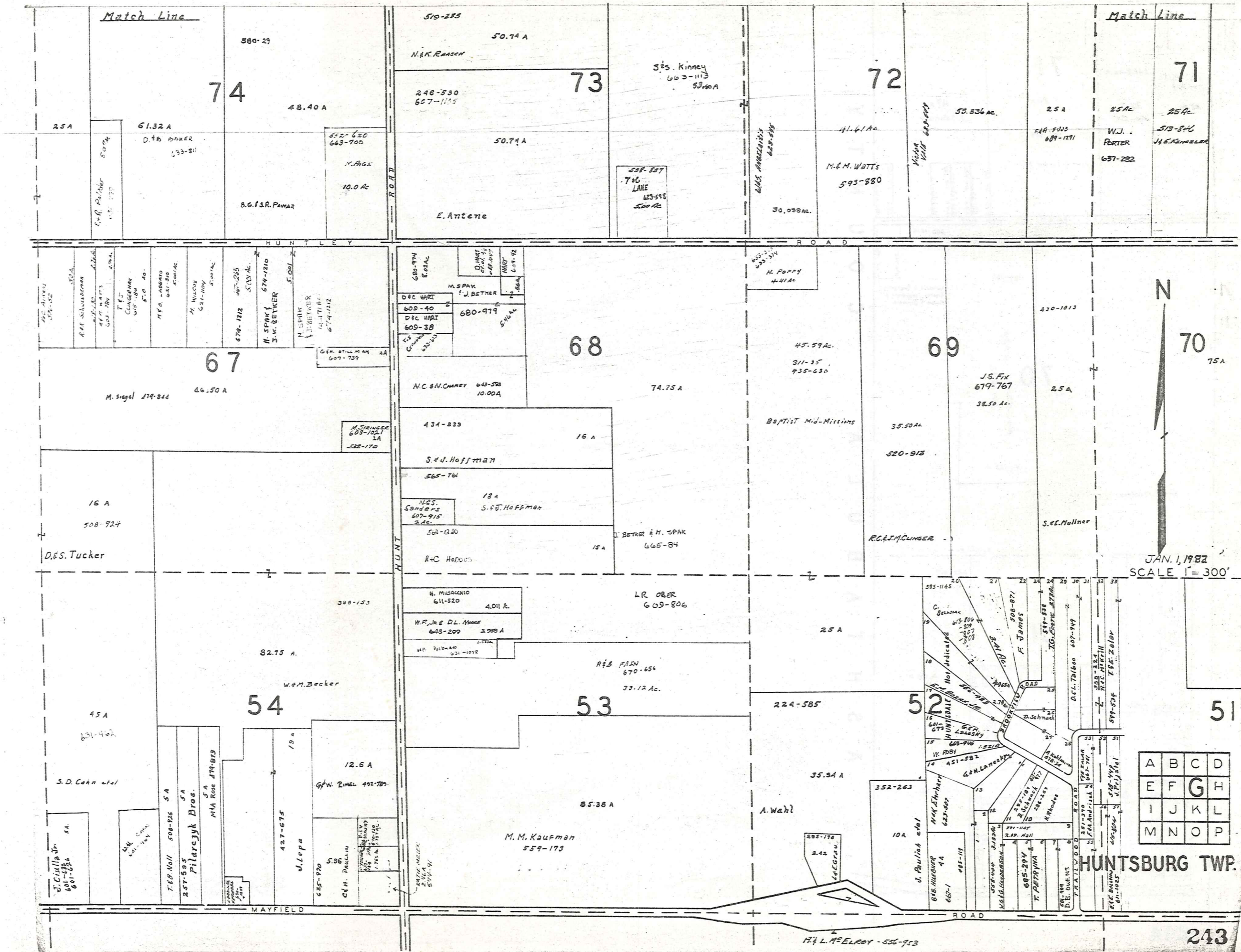
A	B	C	D
E	F	G	H
I	J	K	L
M	N	O	P

HUNTSBURG TWP.



A	B	C	D
E	F	G	H
I	J	K	L
M	N	O	P

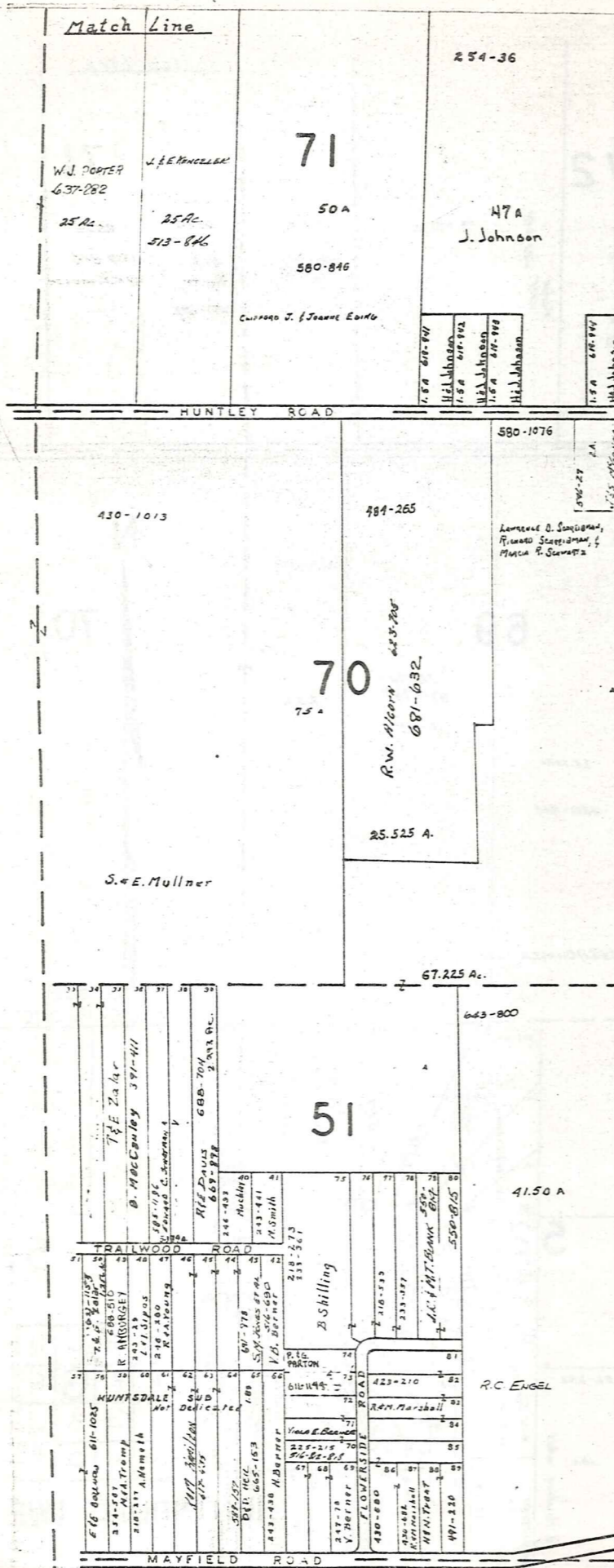
HUNTSBURG TWP.



JAN. 1, 1982
SCALE 1" = 300'

A	B	C	D
E	F	G	H
I	J	K	L
M	N	O	P

HUNTSBURG TWP.



A S H T A B U L A C O U N T Y



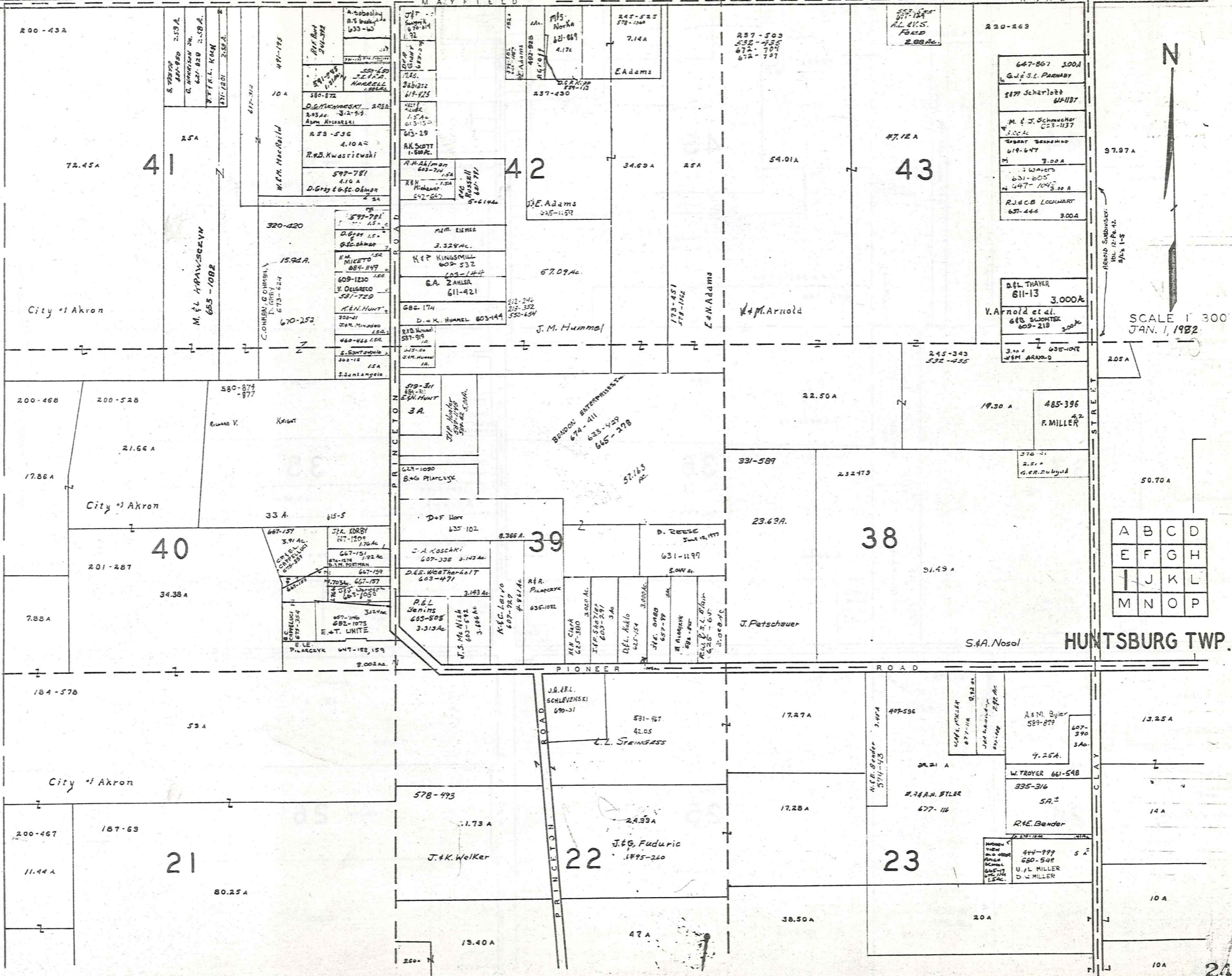
JAN. 1, 1982
Scale 1" = 300'

A	B	C	D
E	F	G	H
I	J	K	L
M	N	O	P

HUNTSBURG TWP.

CLARIDON TOWNSHIP

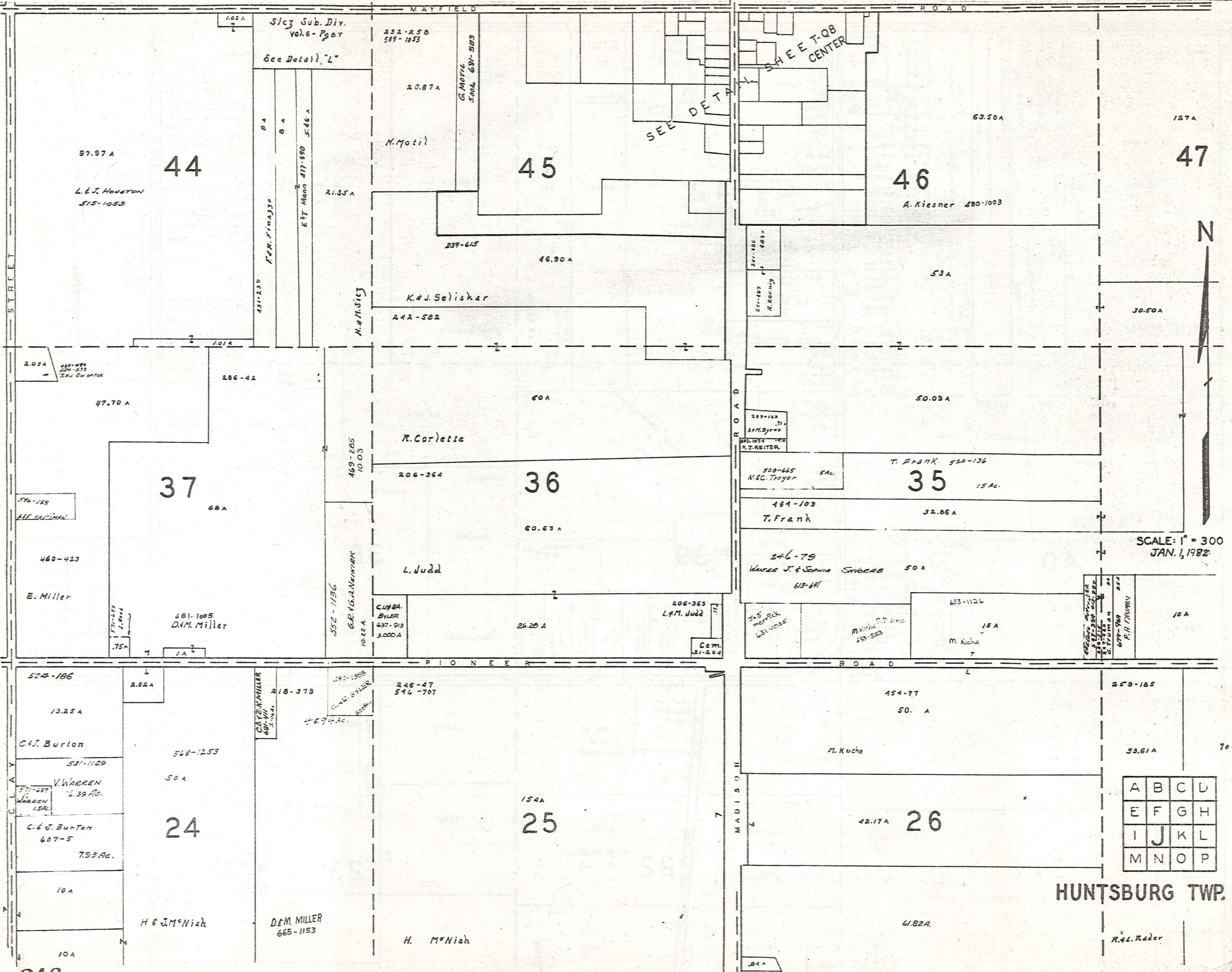
MAYFIELD ROAD



SCALE 1" = 300'
JAN. 1, 1982

A	B	C	D
E	F	G	H
I	J	K	L
M	N	O	P

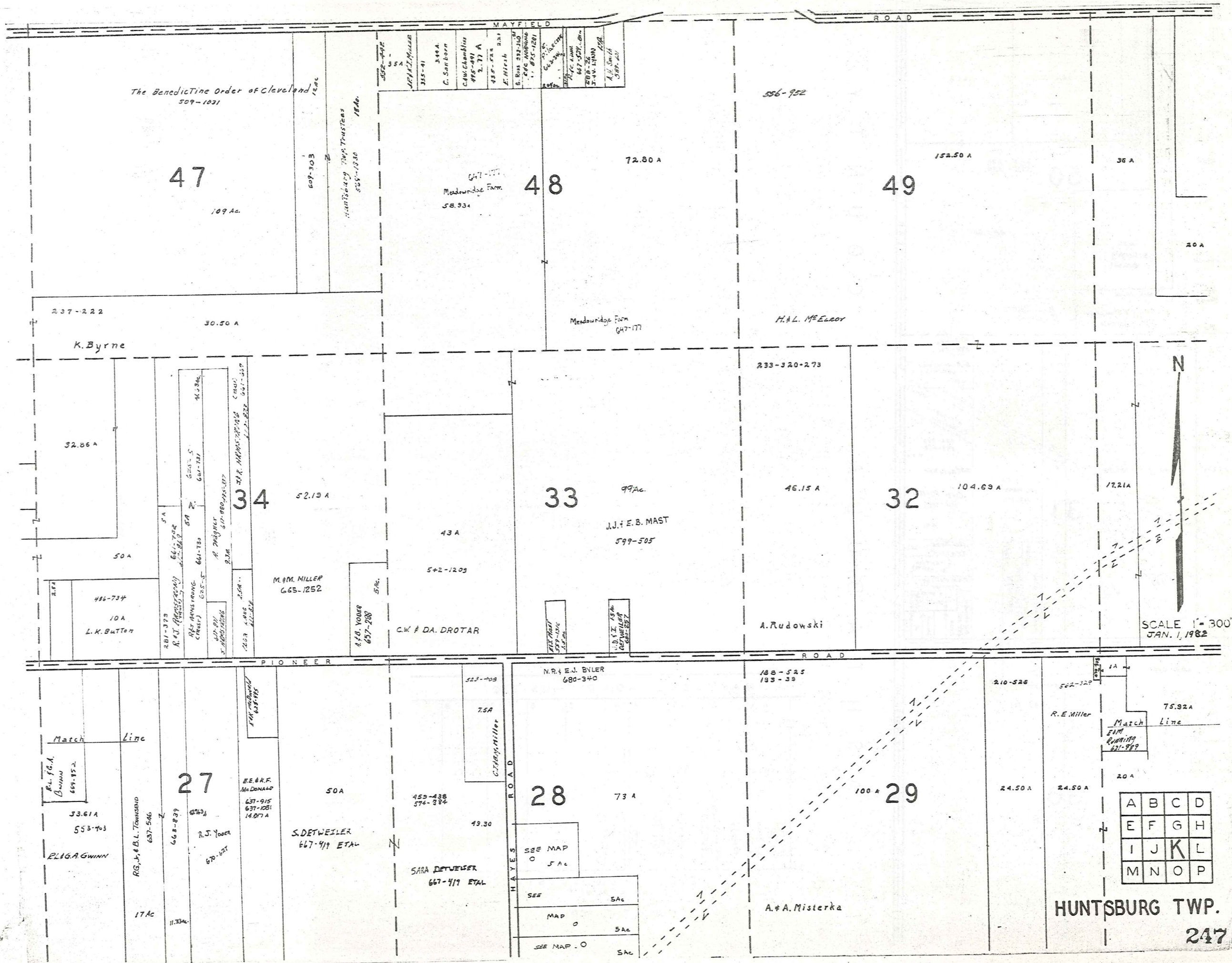
HUNTSBURG TWP.



SCALE: 1" = 300
JAN. 1, 1982

A	B	C	D
E	F	G	H
I	J	K	L
M	N	O	P

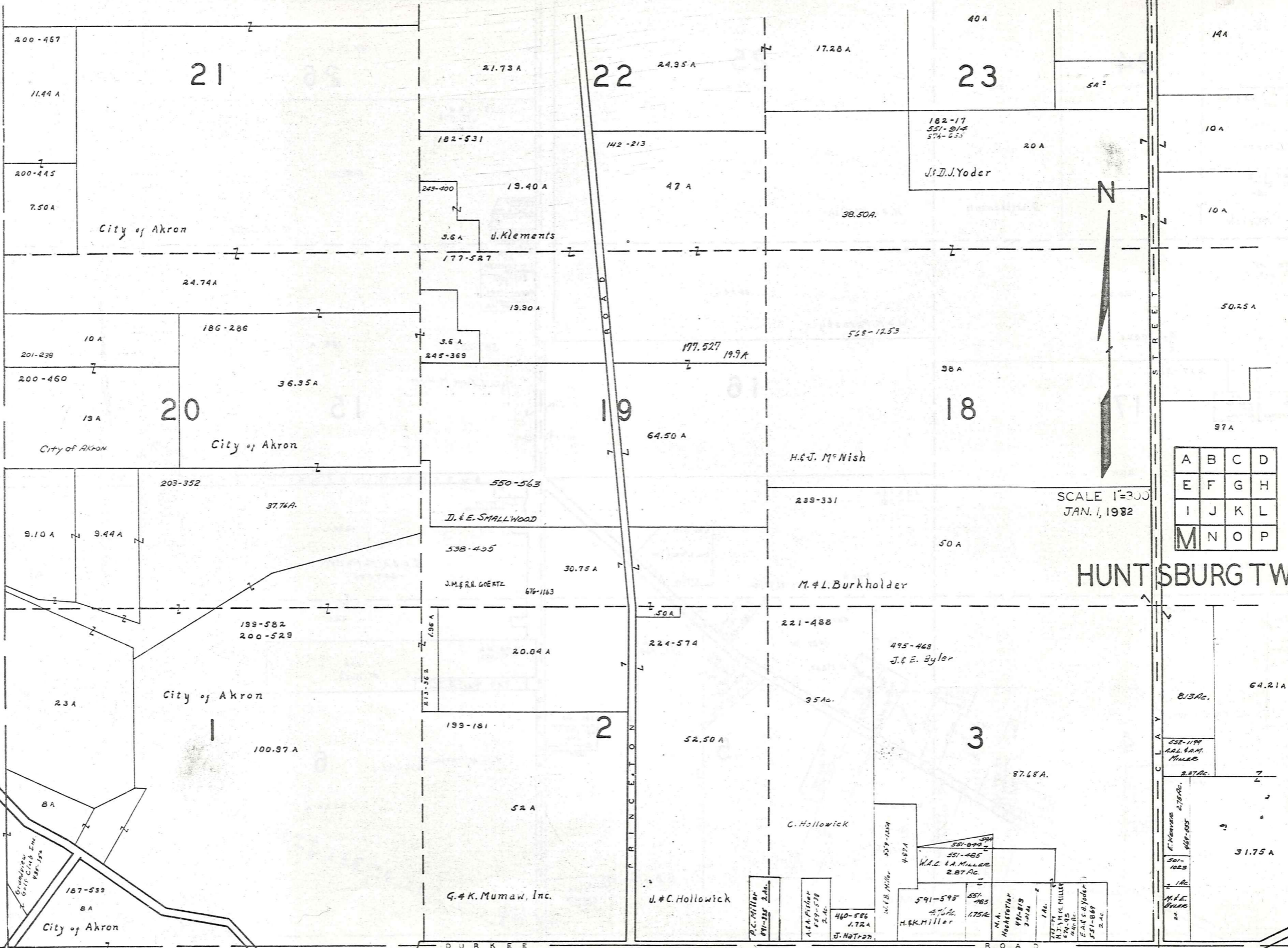
HUNTSBURG TWP.



A	B	C	D
E	F	G	H
I	J	K	L
M	N	O	P

HUNTSBURG TWP.
247

C L A R I D O N T O W N S H I P

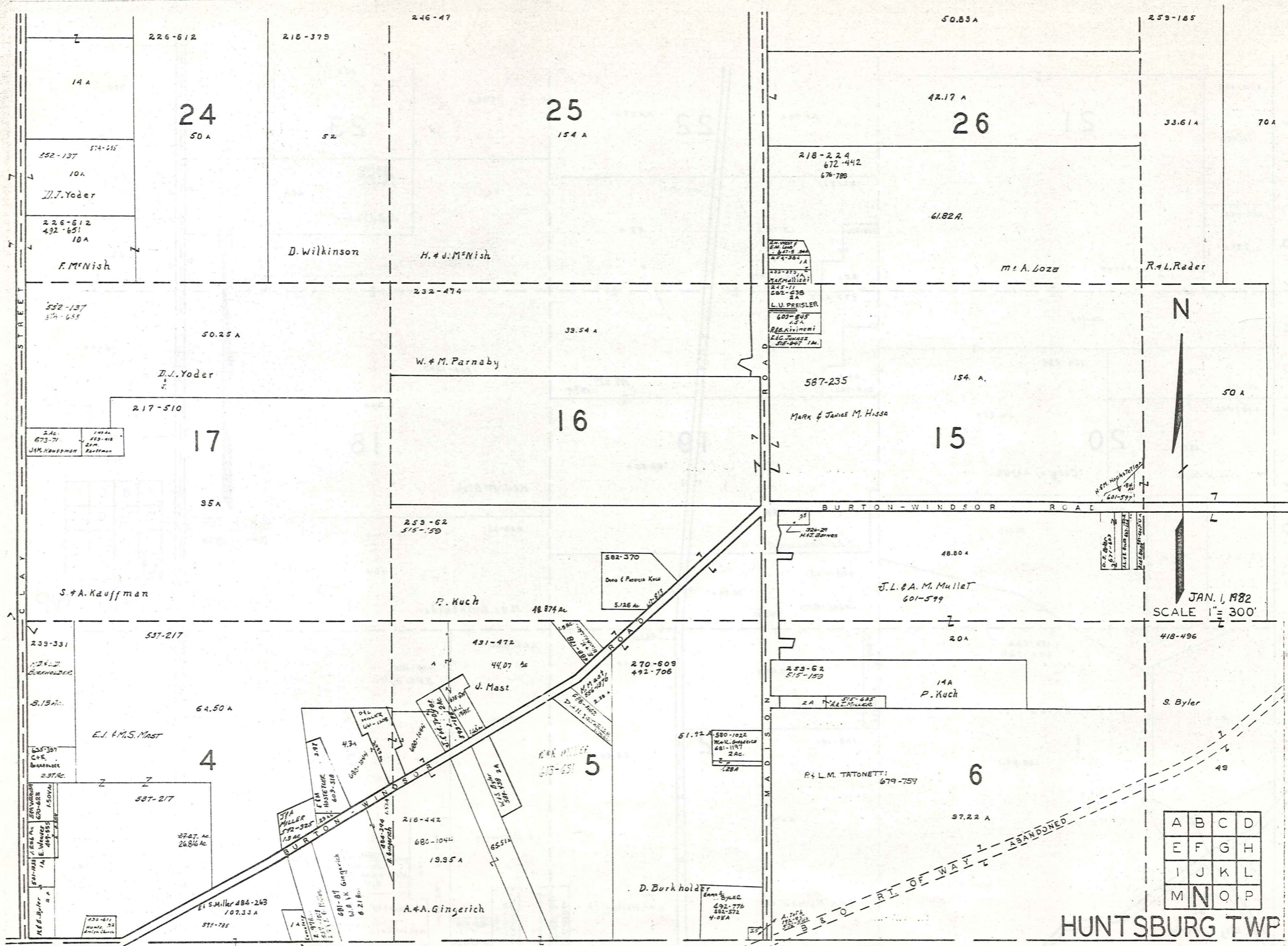


A	B	C	D
E	F	G	H
I	J	K	L
M	N	O	P

SCALE 1"=300'
JAN. 1, 1932

HUNT SBURG TWP

M I D D L E F I E L D T O W N S H I P

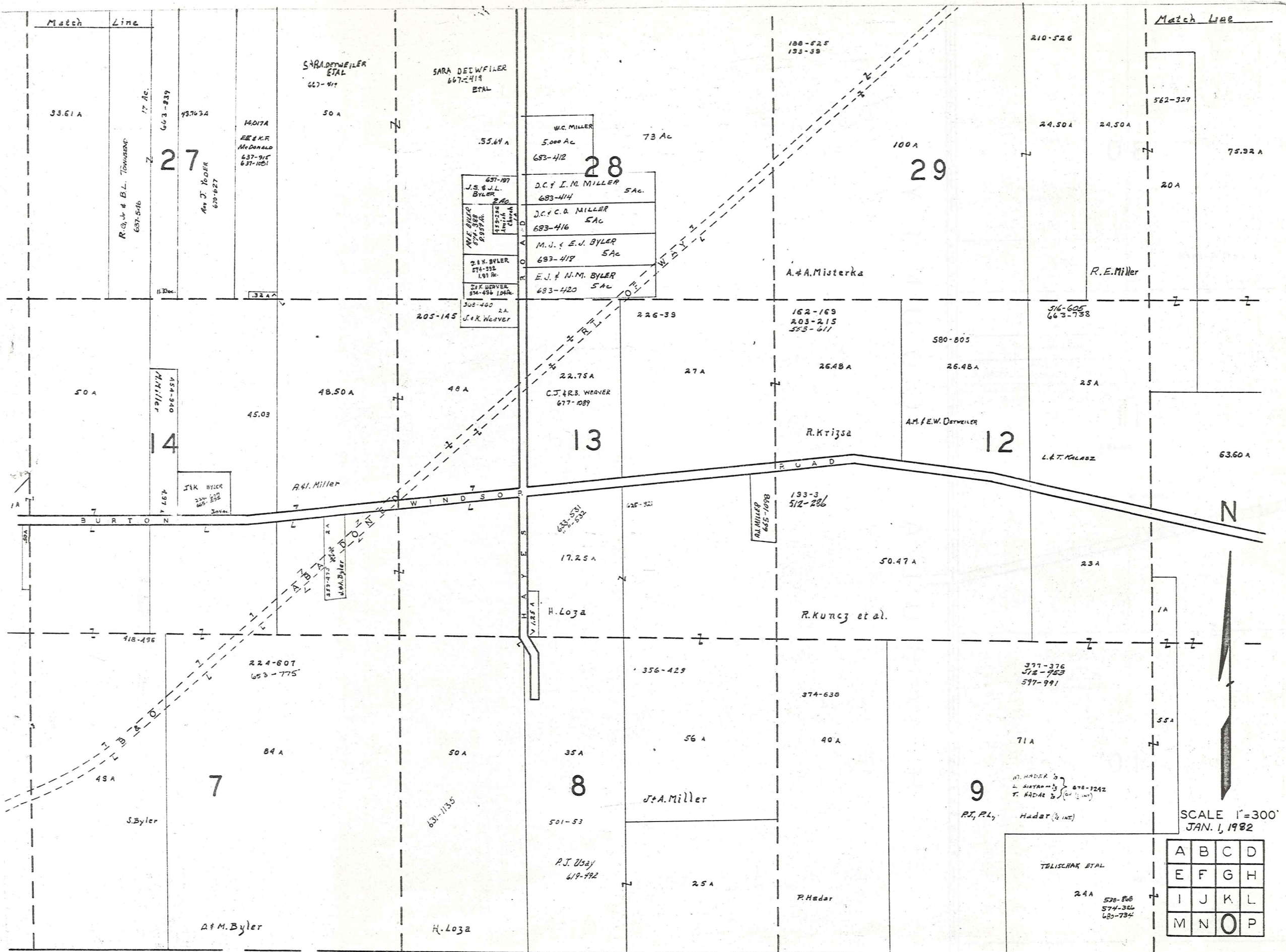


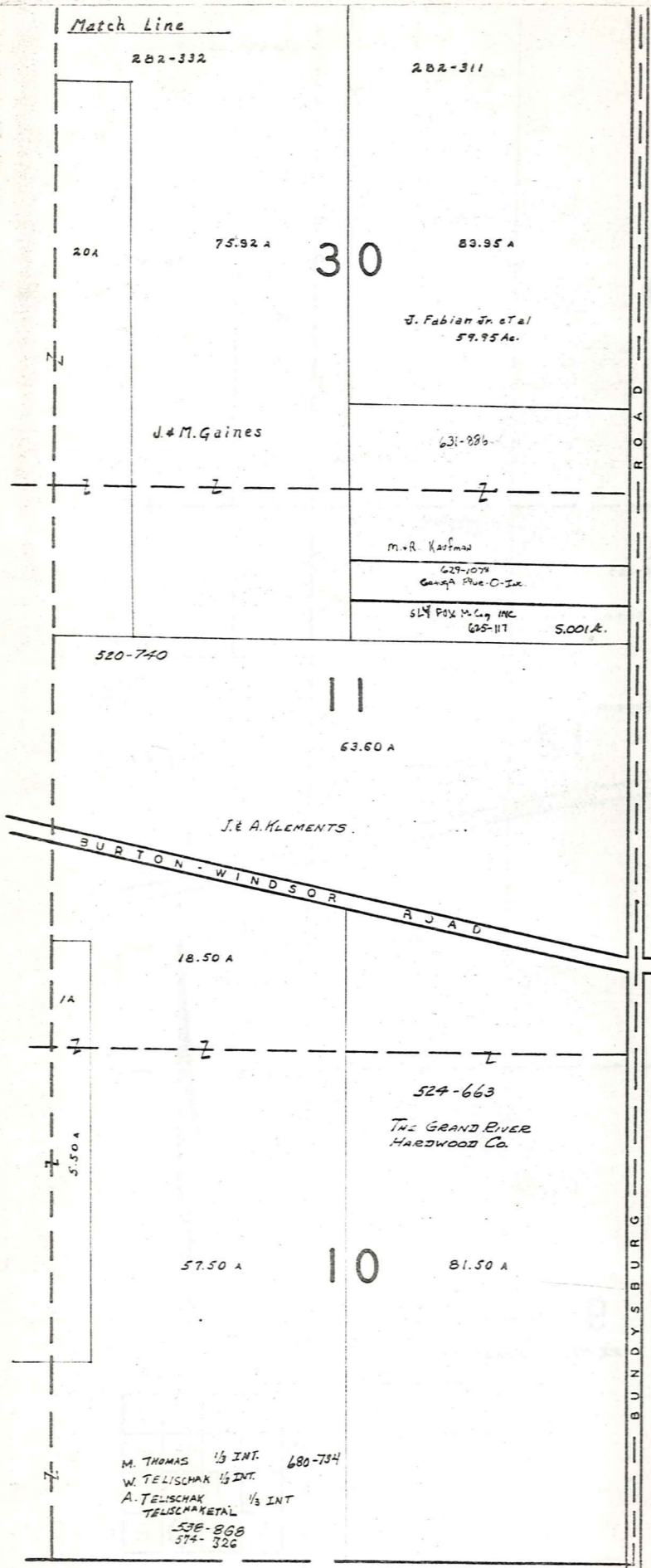
A	B	C	D
E	F	G	H
I	J	K	L
M	N	O	P

HUNTSBURG TWP

250 M I D D L E F I E L D

T O W N S H I P





ASHTABULA COUNTY

BUNDYSBURG



SCALE 1" = 300
JAN. 1, 1982

A	B	C	D
E	F	G	H
I	J	K	L
M	N	O	P

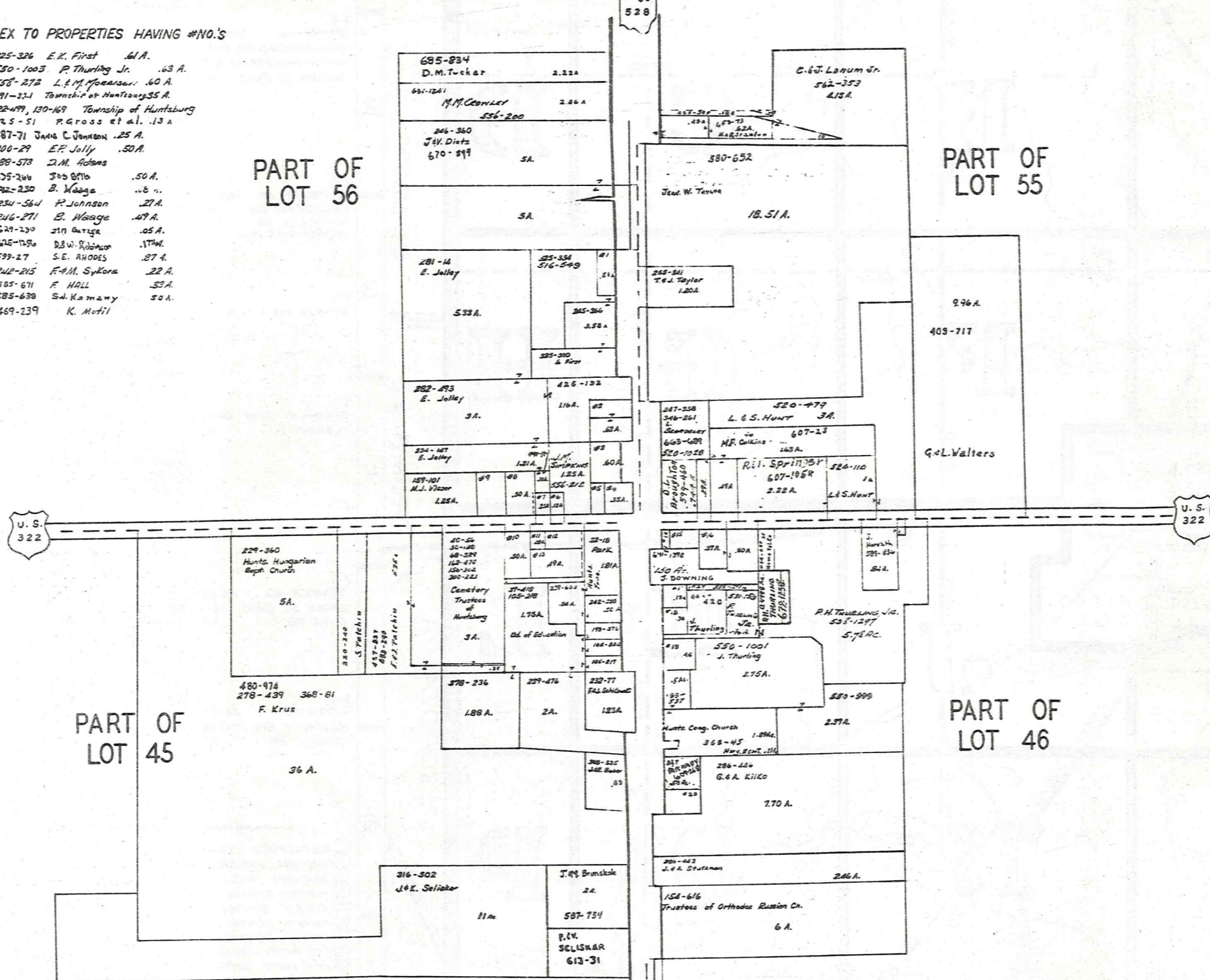
MIDDLEFIELD TWP.

HUNTSBURG TWP

HUNTSBURG TP. CENTER

INDEX TO PROPERTIES HAVING #NO.'S

- #1 325-326 E.K. First 61A.
- #2 550-1003 P. Thurling Jr. 63A.
- #3 558-272 L.E.M. Joensen 60A.
- #4 491-331 Township of Huntsburg 35A.
- #5 122-499, 130-169 Township of Huntsburg
- #6 425-51 P. Gross et al. 13A
- #7 587-71 John C. Johnson 25A.
- #8 200-29 E.F. Jolly 50A.
- #9 188-573 J.M. Adams
- #10 625-266 J.S. Billo 50A.
- #11 842-230 B. Waage 16A.
- #12 254-564 P. Johnson 27A.
- #13 246-271 B. Waage 47A.
- #14 629-230 J.M. Burtz 05A.
- #15 625-1256 D.B.W. Johnson 17W.
- #16 539-27 S.E. RHODES 27A.
- #17 246-215 F.A.M. Sykora 22A.
- #18 585-671 F. HALL 33A.
- #19 685-638 S.A. Kamany 50A.
- #20 469-239 K. Motil



SCALE: 1 in. = 200'
JAN. 1, 1982

Explanation and Use Sheet for Geauga County, Ohio

SAMPLE (PARTIAL) COUNTY INDEX MAP



- Township Boundary
- Township Name
- Village Boundary
- Village Name
- Tract Lot Number
- Street Name
- Acreage
- Deed Book & Page
- Owners Name
- Denotes Continous Ownership

SAMPLE (PARTIAL) MAP PAGE



- Map Page Number
- Village Name
- Village Boundary
- Township Name

SAMPLE (PARTIAL) MUNICIPALITY INDEX MAP



- Street Name
- Village Name
- Township Name

USE OF THE MAP VOLUME

1. LOCATE THE GENERAL AREA OF INTEREST ON THE COUNTY INDEX MAP, ATLAS PAGE 'B', AND NOTE THE MUNICIPALITY NAME (TOWNSHIP OR VILLAGE).
2. REFER TO THE TABLE OF CONTENTS, ATLAS PAGE 'C', AND NOTE THE BEGINNING ATLAS PAGE NUMBER FOR THE MUNICIPALITY OF INTEREST.
3. TURN TO THE PAGE INDICATED. ON THIS PAGE WILL APPEAR AN INDEX MAP FOR THAT MUNICIPALITY.
4. LOCATE THE GENERAL AREA OF INTEREST AND NOTE THE MAP PAGE NUMBER. THIS MAY BE EITHER A LETTER OR A NUMBER.
5. MAP PAGES ARE IN ALPHABETICAL (OR NUMERICAL) SEQUENCE FOLLOWING THE MUNICIPALITY INDEX MAP. FOLLOW SEQUENCE TO THE MAP PAGE INDICATED.
6. LOCATE SPECIFIC PARCEL OF INTEREST AND NOTE THE DESIRED INFORMATION.

NOTE: ON SOME MAPS YOU MAY BE REFERRED TO A DETAIL SHEET SHOWING AN ENLARGEMENT OF THE AREA. THESE MAPS ARE FOUND AT THE END OF THE REGULAR MAP PAGES IN EACH MUNICIPALITY IN EITHER ALPHABETICAL OR NUMERICAL SEQUENCE.

NOTE: CHARDON VILLAGE HAS TITLE SHEETS. TO LOCATE OWNERS NAME, NOTE THE PARCEL NUMBER, REFER TO THE TITLE PAGE FOLLOWING THE MAP OF INTEREST, FOLLOW NUMERICAL SEQUENCE TO THE PARCEL NUMBER OF INTEREST AND NOTE THE DESIRED INFORMATION. IN ALL OTHER MUNICIPALITIES THE OWNERS NAME APPEARS ON THE MAP PAGE.

This book is the property of REAL ESTATE DATA, INC. and is distributed by REDI under a leasing arrangement requiring return to REDI upon termination of the lease. REDI reserves the right to reclaim this book if found in the possession of any firm or person where possession was obtained through any unauthorized source.